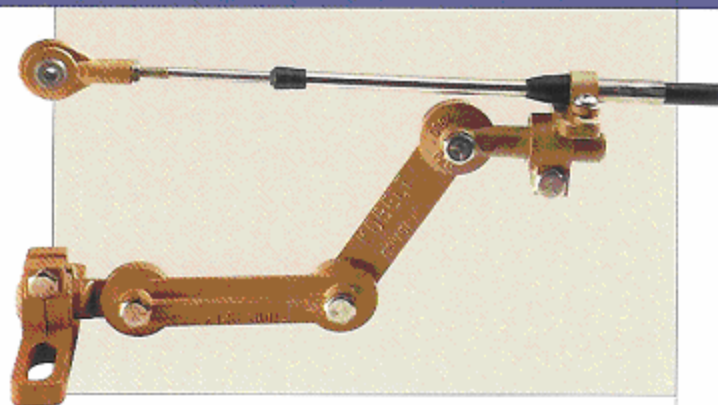


2128 UNIVERSAL ADAPTOR KIT

Catch-A-Bolt

This universal adaptor kit was developed in order to avoid stocking hundreds of different adaptor kits. Its title explains its function. Virtually any bolt, or preferably two bolts on the gear or engine, close to cable attaching point, can be used to install this universal adaptor kit. With its linkage and swivelling ends, cables can be run directly to the clamping bracket and allow easy cable installation; this avoids costly designing and fabrication. It can be used for parallel or series installations.

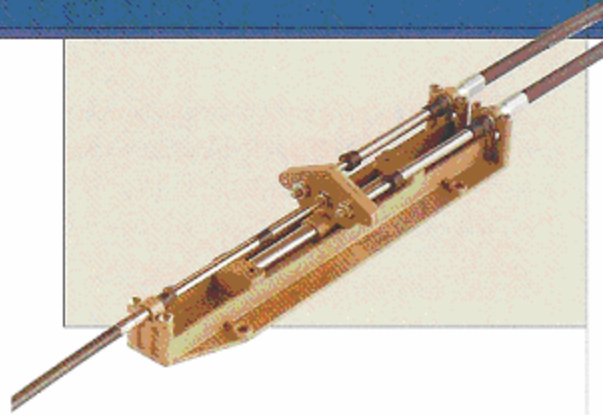


Clamp Kits for Model 2128

Cables Attached	Ordering No.
one-30 series	2128-0031
two-30 series	2128-0032
one-40 series	2128-0041
two-40 series	2128-0042

2124 COMPOUND UNIT

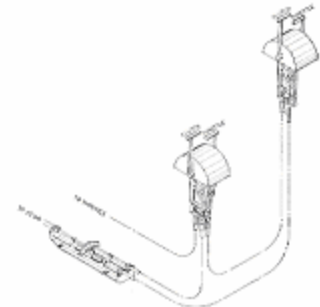
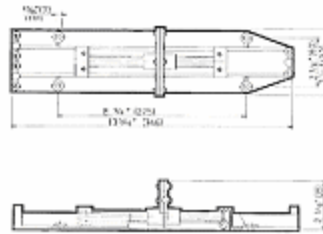
The Compound Unit was developed for two-station applications and for use on compound engine arrangements. On two station applications, long cables sometimes require the use of 40 series cable from the wheelhouse to the engine room, but many in-board out-board engines are designed for connection to a 30-series cable. The Compound Unit can be installed just below the wheelhouse floor. Both stations are connected to it with a 30 or 40 series cable which runs to the clutch throttle. On compound engine installations, the control cable runs into the Compound Unit and two cables lead away to the separate engine throttles.



Cable connection kits are available for any combination of cables.

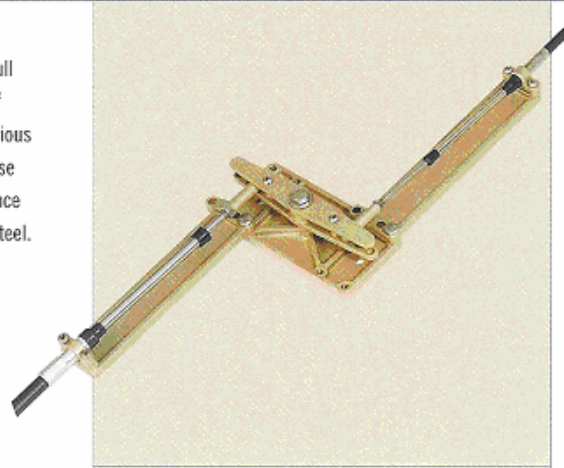
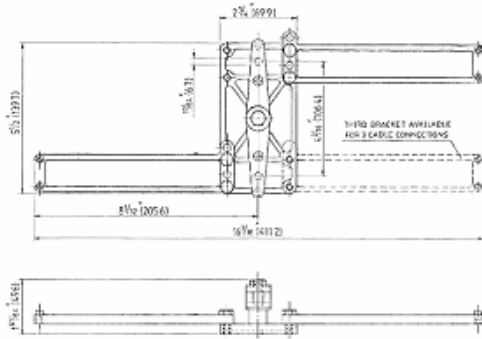
Kits include:

Ordering No.	33 Series Cable	43 Series Cable
2124-0033	3	—
2124-0043	—	3
2124-0143	2	1
2124-0243	1	2

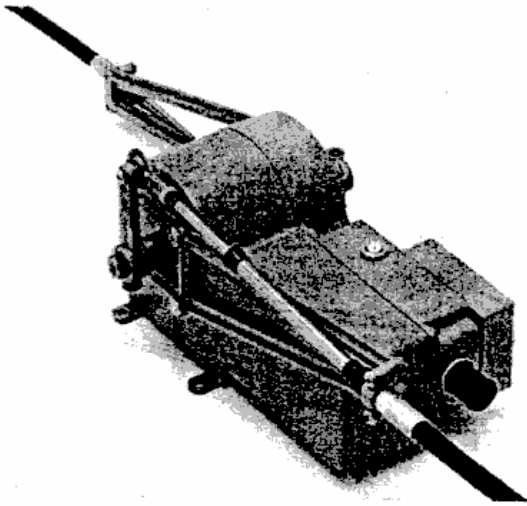


2123 UNIVERSAL CABLE TRANSFER UNIT

The Universal Cable Transfer Unit is a very useful device in Push-Pull Control systems where motion reversal is necessary or where the span of movement must be altered. The ability to connect cables (up to 4) at various connection points on the opposite side of the main lever provides all these functions. It is possible to increase the stroke from 3" to 4" cable or reduce the stroke from 3" to 2" cable. Construction is all bronze and stainless steel.



KOBELT



MODEL 4607 ELECTRIC POWER ASSIST

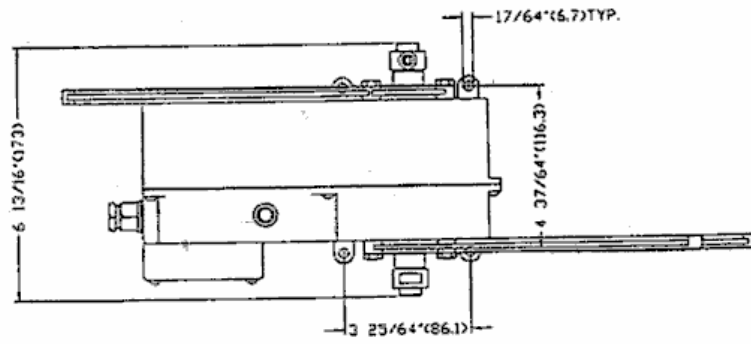
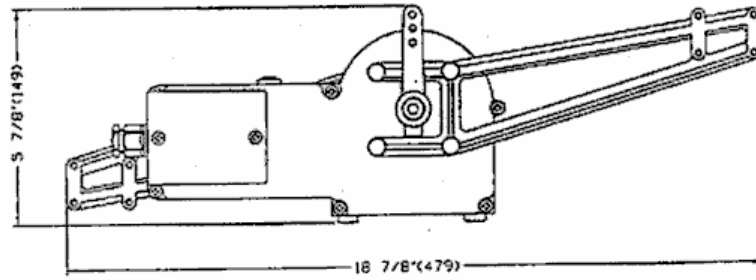
The purpose of the 4607 is to provide a power assist for hard to move push pull cable systems. Its maximum force is 120" lbs. A DC power supply is required, either 12V or 24V a terminal strip is provided for connecting the DC power. In order to install the wire, the cover for the terminal strip must be removed and the wire must be inserted through the connector provided and Feed through to the terminal strip. The positive wire must be connected to the red wire and the negative to the white, where one must be absolutely sure that the right polarity is used. The terminal strip is, located on the mechanical input side.

The cable coming from the control head must be connected to the input side.

A pointer is provided on the shaft to indicate its position, since the bracket can be installed in six different ways. The lever must be removed to coincide with the bracket and cable lead. The pointer must not be removed since it is the only indication for mid position. On the output side, the bracket can be installed in eight different ways. A 3" stroke cable can be installed on the input side and a 4" cable can be on the output side. By installing the input cable (3" stroke) on the second hole from the end of the input lever and installing the output cable on the last hole on the actuator lever, it will increase the stroke to 3 3/4. On long cable runs it is more than likely that there will be a lot of lost motion in the incoming cable and by arranging the cable on lever the motion can be regained.

Order #	4607-12	For 12 Volt
	4607-24	For 24 Volt

MODEL 4607



KOBELT