



Model 7175 Rudder Angle Indicator

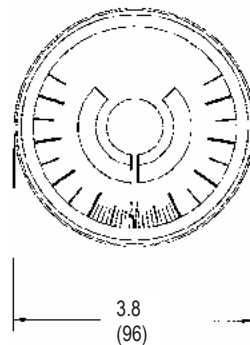
The 7175 rudder indicator system will continuously monitor and indicate the position of your rudder.

Whether you are manoeuvring, power steering or changing course, an accurate readout of the rudder position will be displayed on a tri-coloured three-inch display.

A basic system will consist of a 7175-MY Master station indicator and a Kobelt 7168 Feedback Unit for signal input.

Up to five additional "repeater stations" can be installed using the 7175-SY repeater.

Both the master and repeater have a backlit translucent display with an optional dimmer and are waterproof on the front face.

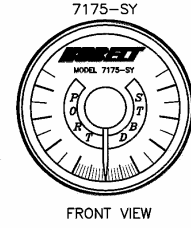
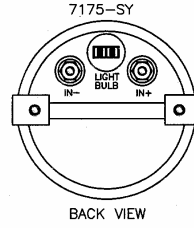
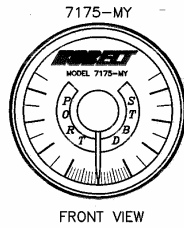
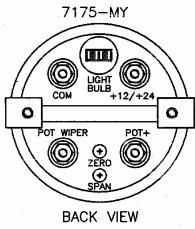


All Dimensions in inches (mm)

Approx. weight: 1 lb (0.5 kg)

Please visit our website www.kobelt.com for more information.

05/2008

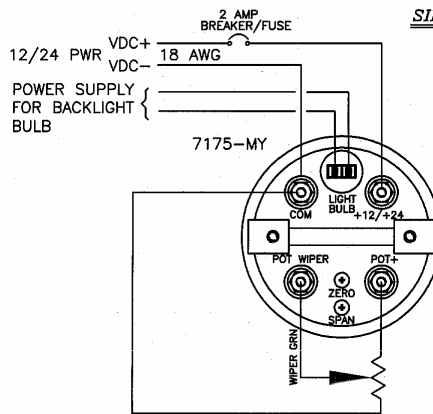


TROUBLESHOOTING

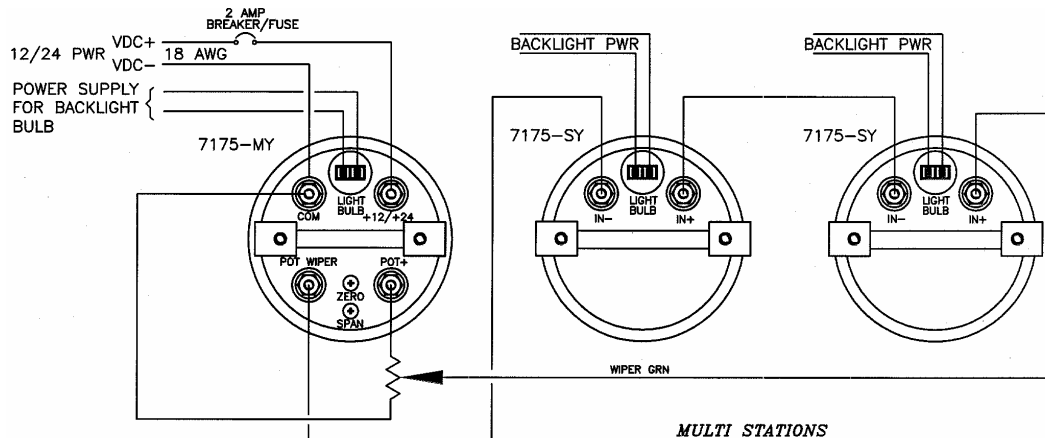
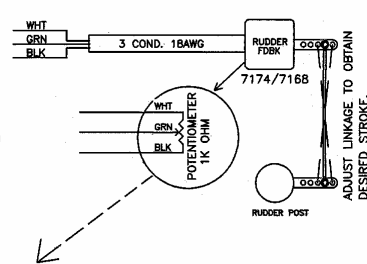
Problem

Action

- | | |
|--|---|
| <ul style="list-style-type: none"> ▪ Indicator(s) not operational ▪ Master indicator moves in opposite direction to rudder ▪ Secondary indicator moves in opposite direction to rudder ▪ Port and Starboard hardover to hardover are not equal ▪ Indicator(s) movement not in sequence with rudder movement | <p>Check for proper wiring and fuse
Reverse wires V+ and V- at respective terminals
Reverse wires as above</p> <p>Rudder angle feedback unit 7174 / 7168 not installed or adjusted properly
Calibrate linkage to obtain desired stroke / calibrate span</p> |
|--|---|



SINGLE STATION



MULTI STATIONS

NOTES:

- Damage to the Rudder Indicator may occur if input voltage is reversed.
- Additional stations, if any, are to be connected in series as in figure 3.
- In-line fuse (2A) or a breaker from the power source is recommended.
- Match lamp voltage to power supply voltage
- Lamp provided is of 12 VDC. (A 24 VDC is available as spare)
- Zero adjust will allow ± 1 degree of adjustment